

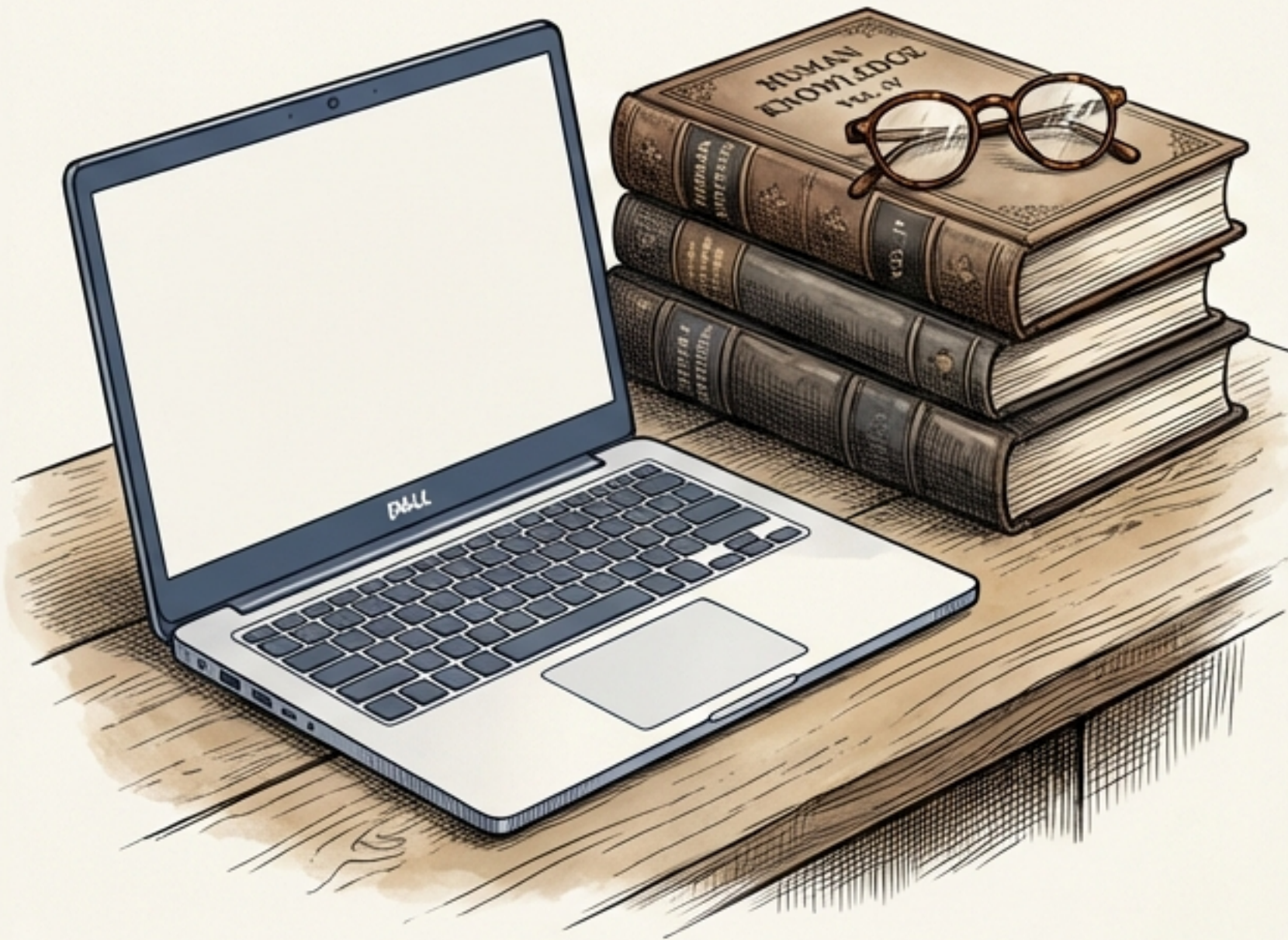


Learning with Machines: Reflections on 50+ AI Experiments

From Information to Wisdom – A Personal Journey by Dr. Bruce Lloyd

Based on the field notes of a
retired academic exploring the frontiers of AI.

A Retired Academic, A Basic Dell, and a Question



The Explorer: Dr. Bruce Lloyd, retired 20 years ago.

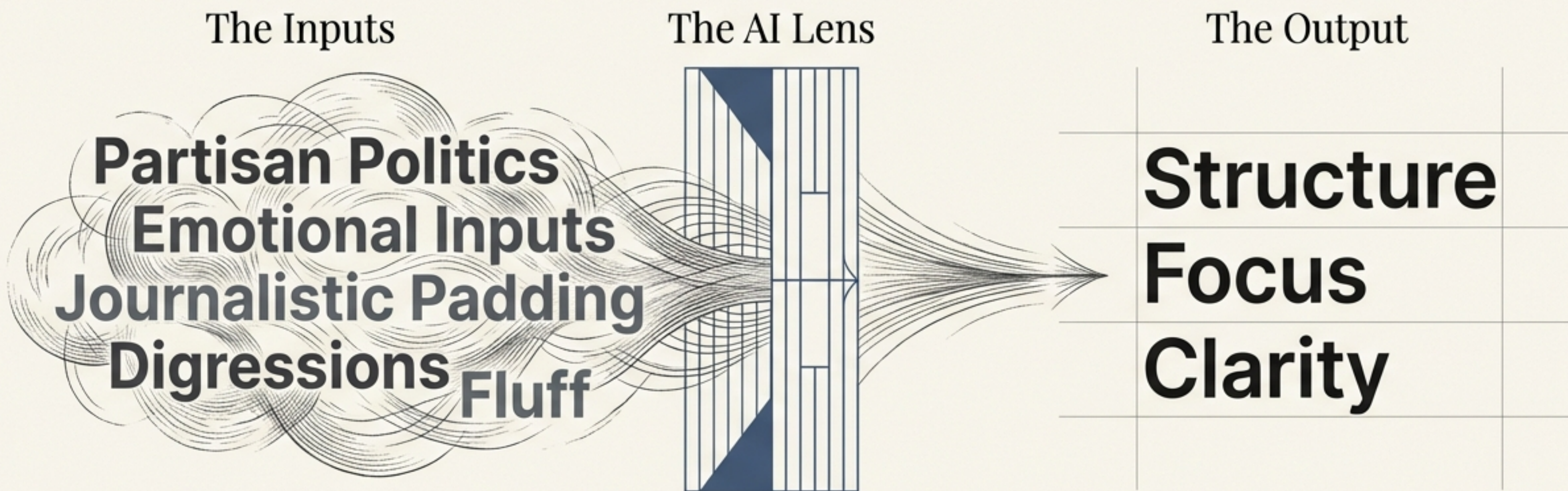
The Gear: A basic consumer Dell computer. (Proof that you need **relevant hardware, but not a supercomputer**).

The Motivation:

- Frustration with circular discussions that “reinvent the wheel.”
 - Desire to escape academic obscurity.
-

The Hypothesis: **Can AI cut through the noise, reduce partisan padding, and actually move conversations forward?**

Cutting Through the Noise of Organizational Games



Structure

Avoids unnecessary padding and organizational theater.

Focus

Reduces emotionally driven inputs that derail quality conversation.

Synthesis

Answers the specific question asked, cutting through obscurity.

Result: Frees up human capacity for new, creative areas to make actual progress.

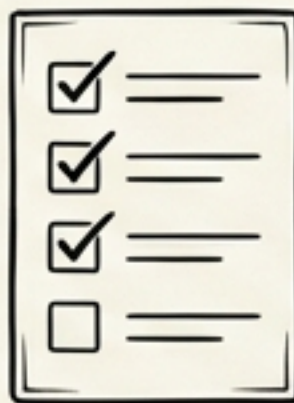
Strategic Foresight: The Machine as a Sparring Partner

The Prompt



What is the main challenge facing business organizations over the next decade?

Initial AI Output



1. Tech Disruption
2. Sustainability
3. Geopolitics
4. Workforce Evolution

Standard, expected answers.

The Human Intervention



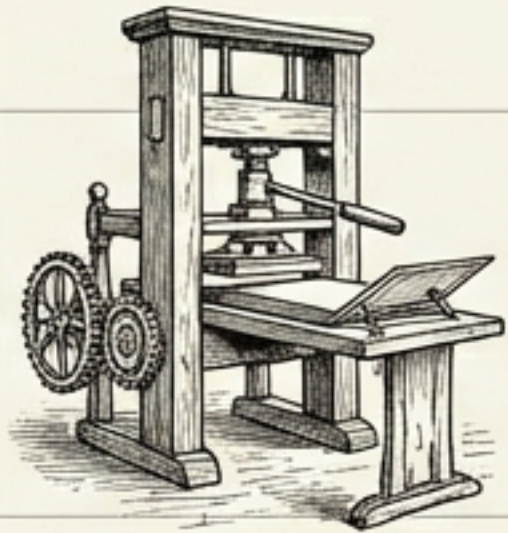
Challenge: "I disagree. The real challenge is reconciling Institutionalization vs. Innovation."

Result: AI validated the tension and generated specific strategies to address it.

Insight: AI is not just an Oracle; it is a collaborator. It improves when you challenge its assumptions.

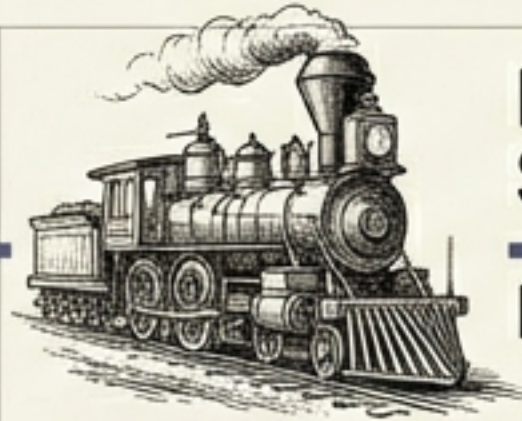
The Consensus Engineer: Navigating History and Crisis

Historical Context



Printing Press
Revolution

Inter

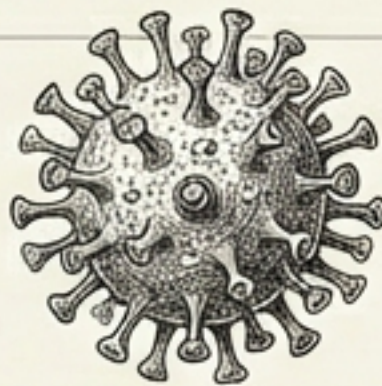


Railways &
Speculation

Inter

Understanding hype cycles and vested interests.

Crisis Management



Covid
Lessons
Inter

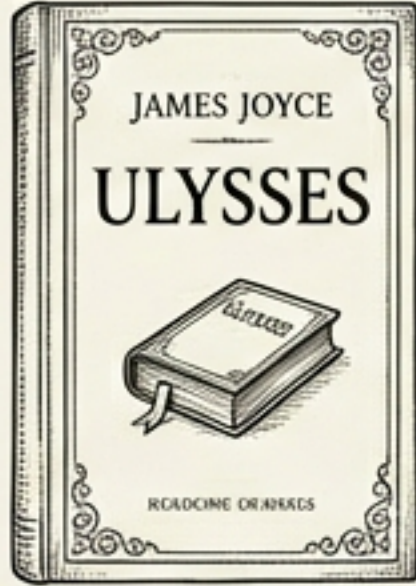


Global Conflict
Roadmaps
Inter

Synthesizing vast data to outline
stakeholder-acceptable roadmaps.

*“Attempting to
produce perfect
answers is often
unaffordable.
AI provides the
‘90% answer’
instantly—a
starting point
for consensus.”*

Infinite Patience: Decoding Culture and Complexity



Literature

Clarifying James Joyce's core message.



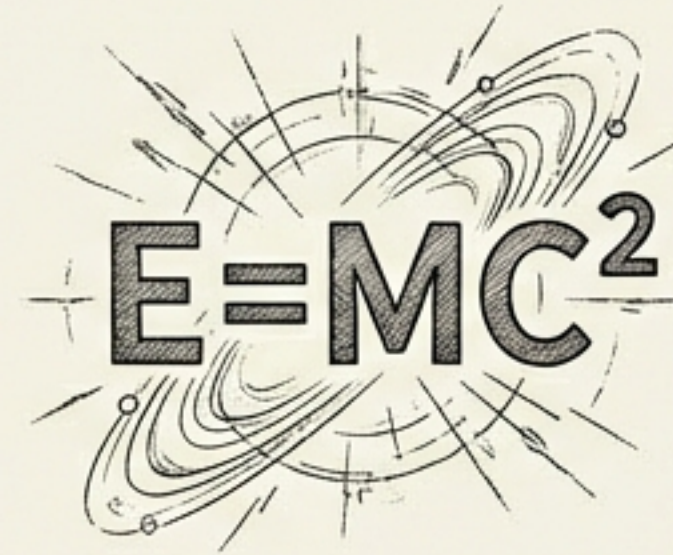
Philosophy

Critiquing "The New Machiavelli" vs "The Prince".



Pop Culture

Identifying success factors of "Death in Paradise".



Science

Explaining derivation with infinite patience.

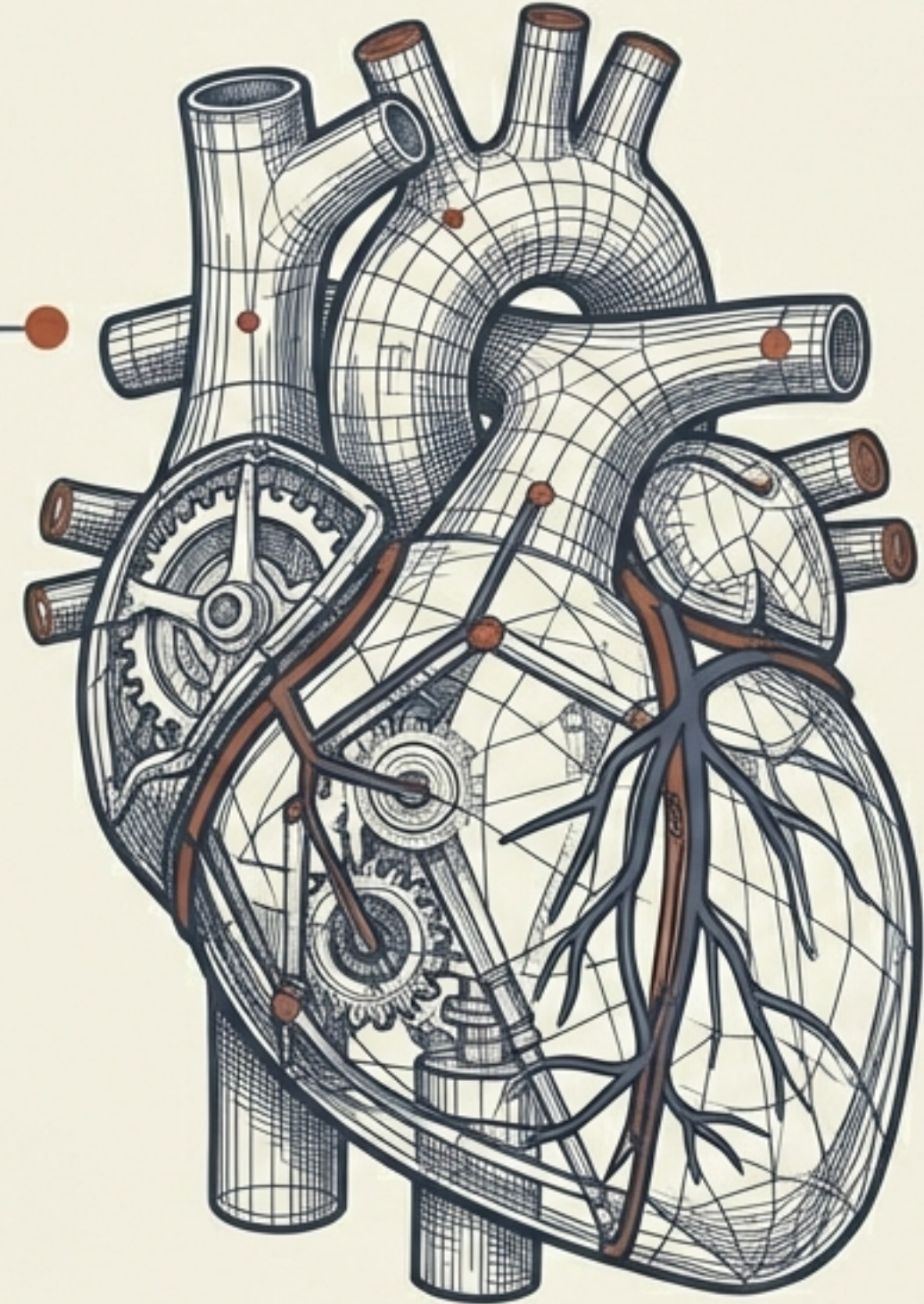
Insight: AI acts as a tireless tutor, creating accessibility to complex cultural works without judgment.

Simulating Wisdom Without Feeling

“Not laws alone can
guard the soul,
Nor markets teach
the world its role.
Let empathy, not
greed, define
The algorithms
we design.”

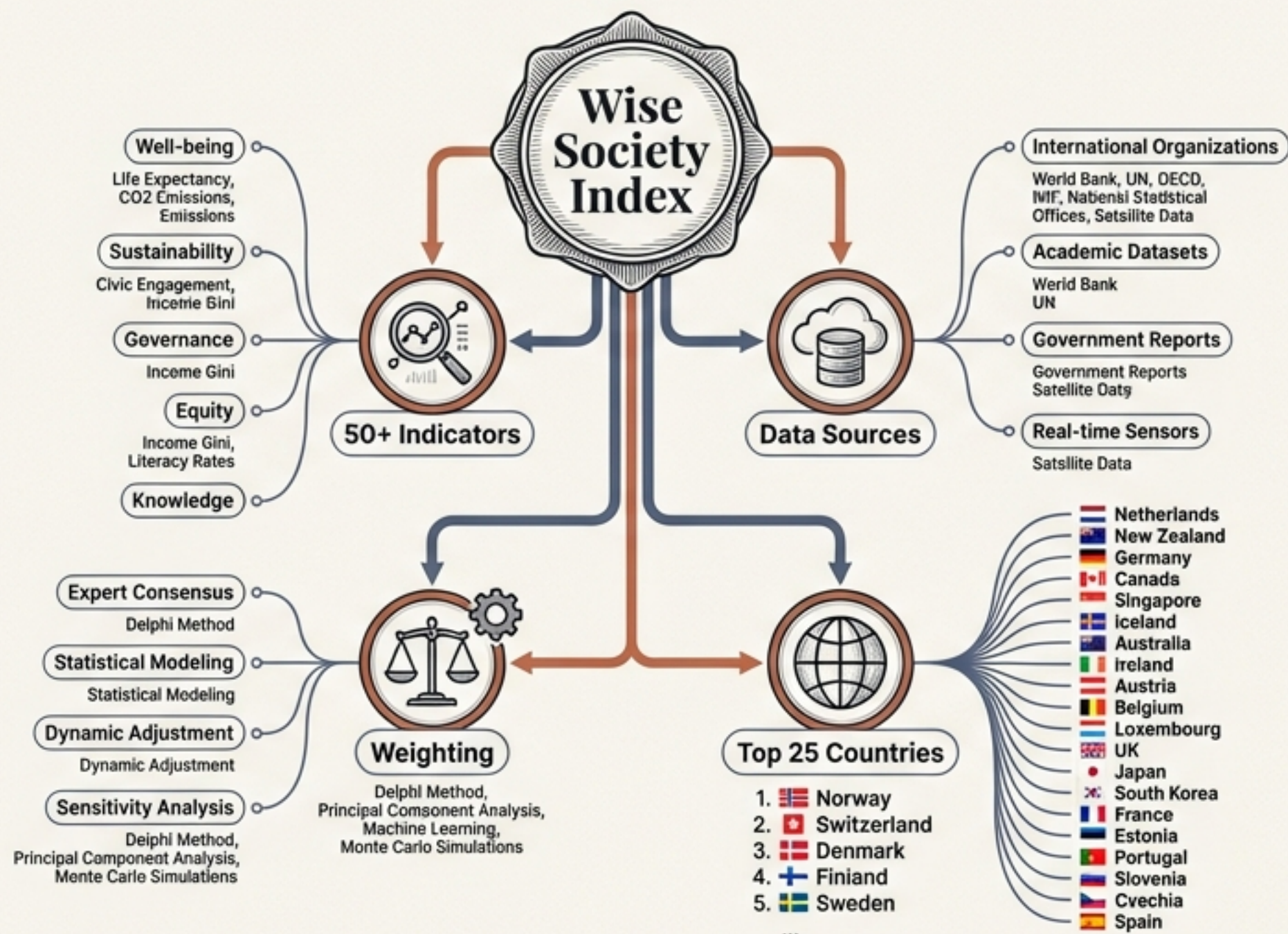
— AI generated poem on Global Ethics

The Critique:
The AI knows the
rhythm and the words,
but lacks emotional
dimension. It
simulates wisdom,
but cannot care.



Conceptual Heavy Lifting: The Wise Society Index

The Challenge:
Build a fully
fleshed-out
framework with
metrics and
rankings.



The Outcome:
A complete
framework
generated
immediately.

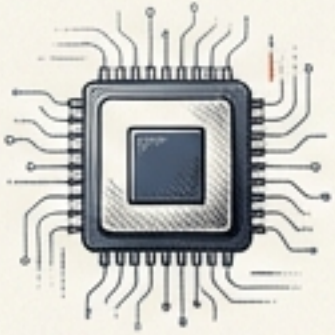
Significance: AI performs weeks of conceptual modeling in moments, providing a foundation for human refinement.

The Core Tension: Innovation vs. Institutionalization



Why it matters: Hyper-competitiveness is unsustainable. AI can map strategies to reconcile these forces, but the leader must first identify the tension.

Limitations, Biases, and The Human Hypocrisy



Hardware Reality

You cannot explore the future on obsolete hardware.



Data Security

A major barrier for commercial organizations.



Hallucinations

Answers need checking; **use multiple AIs** to critique each other.



The Hypocrisy

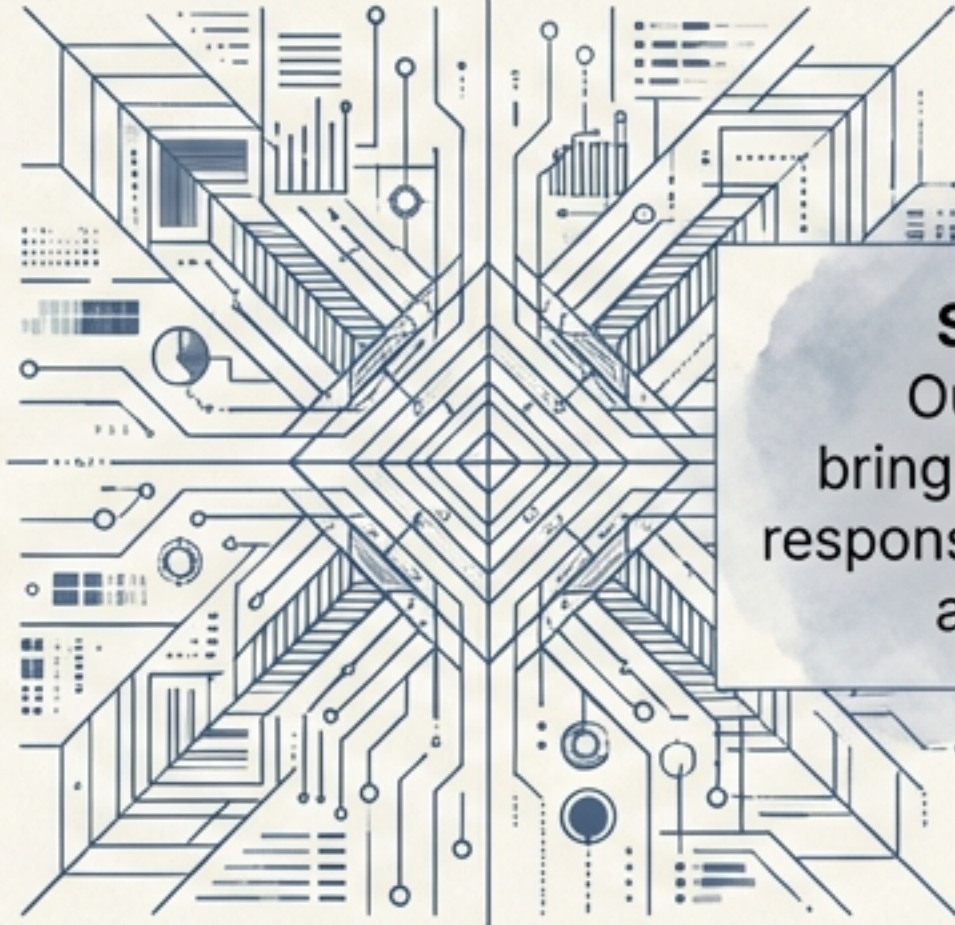
We demand **hyper-efficiency** from AI while questioning the sustainability of **hyper-competitiveness**.

Self-Correction: AI is often better at recognizing and correcting biases than humans, if asked.

Calculation vs. Care

The Machine

- Can Calculate.
- Can Summarize.
- Can Structure.



Synthesis:
Our task is to
bring both together,
responsibly, reflectively,
and wisely.

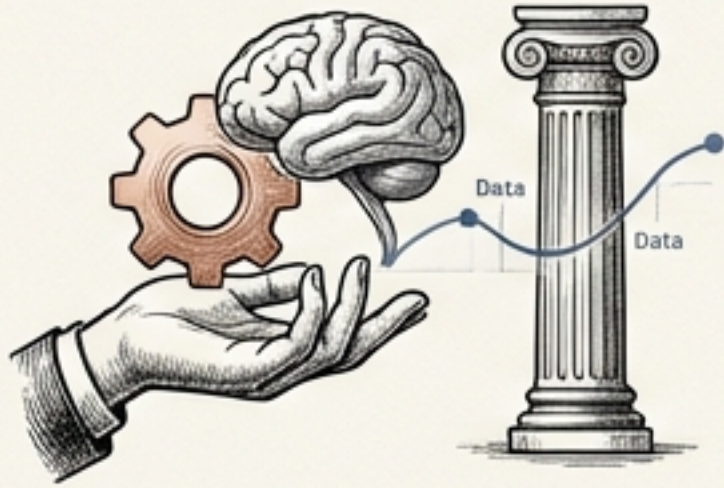


The Human

- Can Care.
- Can Question.
- Can Act Responsibly.

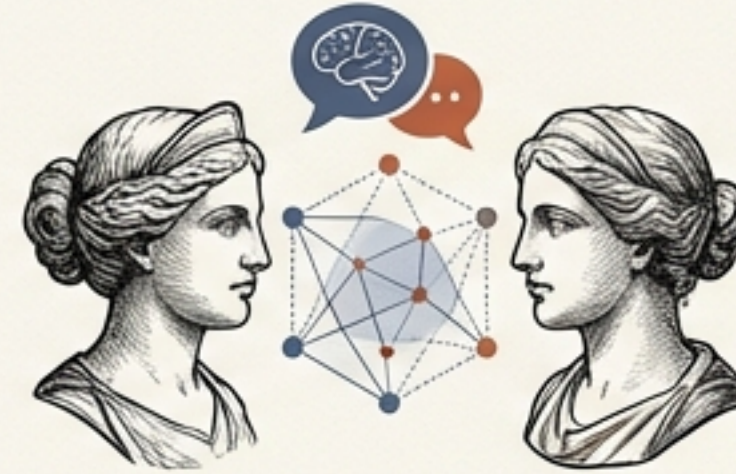
“The new unique competence is not answering questions, but asking questions that have never been asked before.”

Moving Forward: An Action Framework



Grapple with Tension

Explicitly address **Innovation vs. Institutionalization** in strategy.



Improve Conversations

Use 'Knowledge Cafés' and AI to improve dialogue quality, not just speed.



Ask 'Why?'

Focus intensely on the **intent** behind the inquiry.



Strategic Alignment

Link 'Future' issues (demographics, ethics) directly to decision-making.

The Widening Gap



The divide increases between those who use it effectively and those who don't.

The Human Competitive Advantage



AI is an incredible piece of technology that will radically change our lives. But it is the human capacity to care, to question, and to act wisely that remains our competitive advantage.

The machine provides the map. The human chooses the destination.

Appendix: The Digital Toolbox

Source Material	AI Models Utilized
Based on "Learning with Machines: Reflection on AI Experiments" by Dr. Bruce Lloyd.	<ul style="list-style-type: none">● ChatGPT● Gemini● Copilot● Claude● Grok● Perplexity● Deepseek● NotebookLM

Experiments conducted using free versions of these tools on consumer hardware.